

## Tile Q & A

### What happens after I purchase a tile?

- Once we have received your payment, we will mail you a template, guidelines, and return envelope.
- You can use the template we provide for your design or your own paper.
- You can even send us a piece of artwork that your child has already created!
- Then you send your artwork to us.
- We scan the artwork and create a digital image. We then use the digital image to create a tile.

**Where do I design my tile?** You create your design at home using the guidelines we provide, use your own paper, or send us a piece of original art that you or child has already created.

**How do I get my artwork to you?** You mail your artwork to us in the envelope we provide. If your original artwork is too large to fit in our envelope, please use your own envelope or bring it to Stepping Stones Museum for Children.

**What kind of materials can I use to create my design?** Use your favorite materials. Paint, markers, oil craypas, and paper collages are all very effective. The brighter, the better! We ask that you avoid using pencil, light crayon, and metallic materials. Photographs are not acceptable. Paper can be either white or colored. Any size paper is fine, square or rectangular.

**Will my artwork be returned?** If you would like, we can make arrangements to have your artwork returned to you.

**What should I draw?** Any theme is fine. Be creative. Your design can include, animals, flowers, people, shapes, abstract designs – anything you want! Please avoid themes that may appear to be violent or inappropriate. For best results, finished artwork should have as little white space as possible.

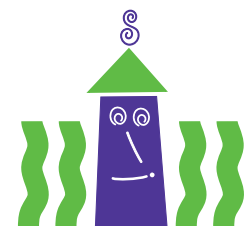
**Is text acceptable?** Please limit text to your child's initials or first name in the lower right corner. If you prefer, you can select to purchase a solid color tile that will be printed with your family or business name.

**Is there a deadline?** We will be accepting tile orders throughout 2009 and the spring of 2010, but we would appreciate receiving your artwork as soon as possible.

**When will my tile be installed in the museum?** The tiles will be installed while the museum is being renovated in the fall of 2010. In the meantime, look online to view our virtual tile wall!

**Is my tile purchase tax deductible?** Yes, tile purchases are 100% tax-deductible.

**Who do I contact if I have more questions?** Please contact us at 203 899 0606, ext. 281.



Stepping Stones Museum for Children

Mathews Park, 303 West Avenue  
Norwalk, Connecticut 06850  
steppingstonesmuseum.org